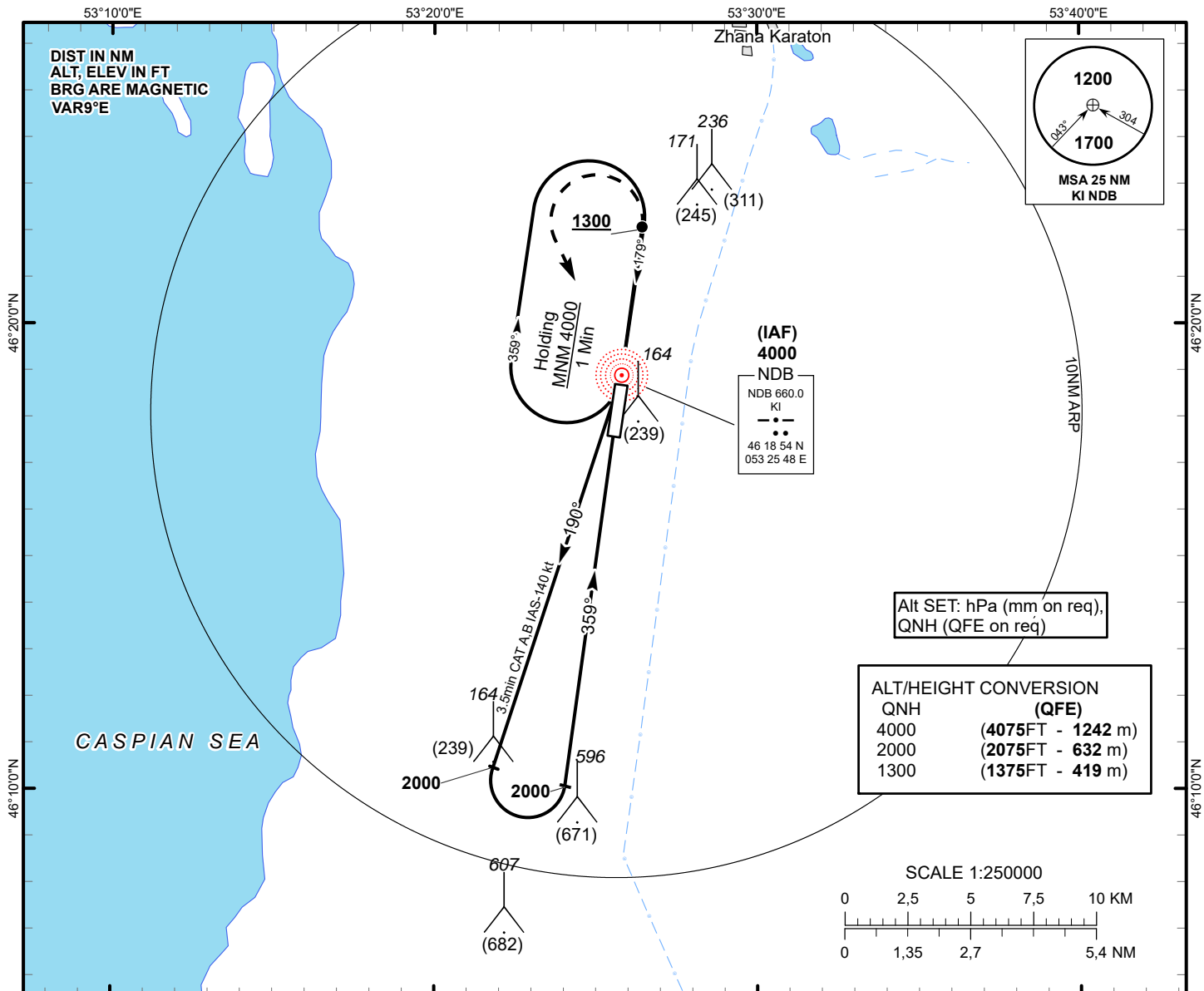


INSTRUMENT  
APPROACH  
CHART - ICAO

AERODROME ELEV -75FT  
HEIGHTS RELATED TO  
AD ELEV

TENGIZ TOWER 119.2

TENGIZ  
BC NDB  
RWY 36



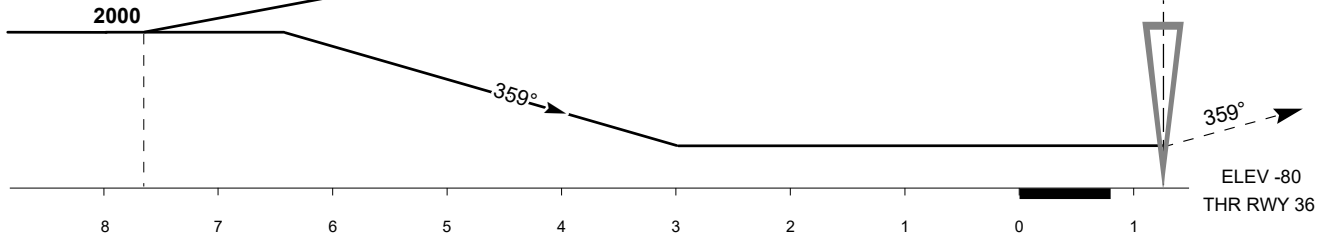
MISSED APPROACH

Climb on track 359° to 1300 or above.  
After passing NDB KI maintain 359°  
for 1 min 10 sec,  
then turn LEFT to NDB KI.  
Climb initially to 2000,  
then as directed by ATC.  
**RADIO FAILURE:** In the case  
of RCF climb to 4000 to NDB KI  
and join to holding pattern.

TRANSITION ALT  
10000

IAF  
4000

MAPt  
NDB  
KI



CHANGE: Direction; Revised.

Aircraft Category		A	B	C	D
Straight-in Approach OCA/H	NDB	920(990)	920(990)		
Aerodrome Operating Minima MDH ft x RVR(CMV)	NDB				

TENGIZ (UATZ)  
BC NDB RWY36

AERONAUTICAL DATA TABULATION

BC NDB approach to RWY36 from KI NDB	
Fix/point	Coordinates
KI NDB (IAF)	46° 18' 54.1"N 053° 25' 48.1"E
THR RWY36	46° 17' 44.11"N 053° 25' 34.00"E